

90°8'W

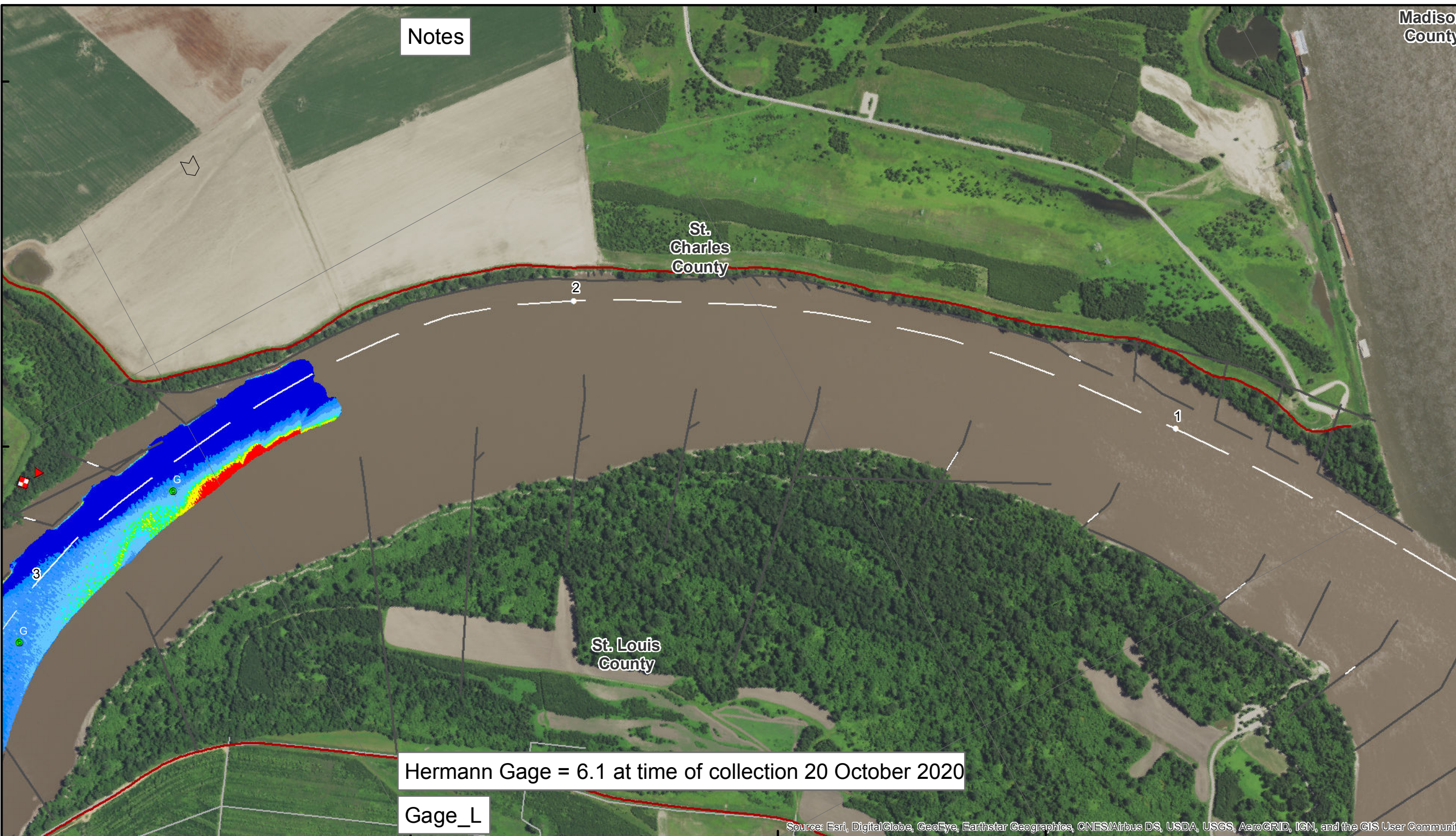
38°50'N

90°7'W

90°9'W

38°50'N

38°49'N



Notes

Madison County

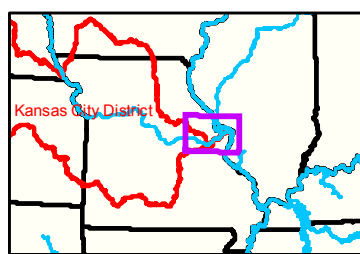
St. Charles County

St. Louis County

Hermann Gage = 6.1 at time of collection 20 October 2020

Gage_L

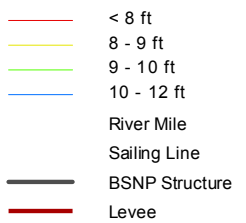
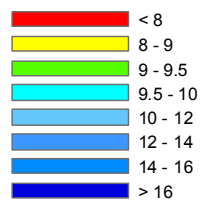
Source: Esri, DigitalGlobe, GeoEye, Earthstar Geographics, CNES/Airbus DS, USDA, USGS, AeroGRID, IGN, and the GIS User Community



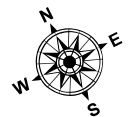
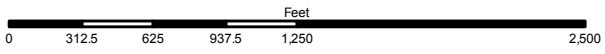
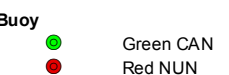
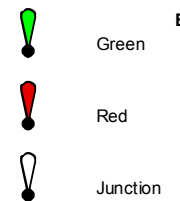
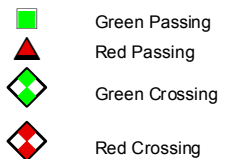
90°9'W

38°49'N

90°8'W



LEGEND



NOTES:
 Horizontal Coordinate System:
 World Geodetic System of 1984 (WGS84), projected to the Universal Transverse Mercator (UTM) Zone 15 North.
 Distance units in U.S. Survey Feet

Vertical Datum:
 Soundings are shown in feet and indicated depths are referenced to water surface at time of collection.

The information depicted on this map represents the results of a survey conducted on the date indicated and can only be considered to represent the general condition existing at that time.

The location of navigation aids are based on and provided by the U.S. Coast Guard.

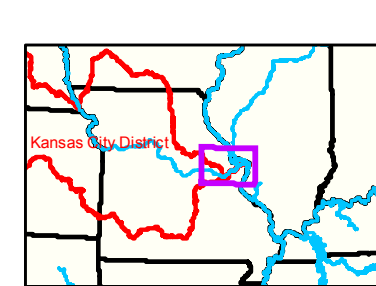
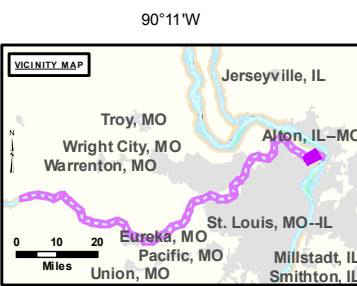
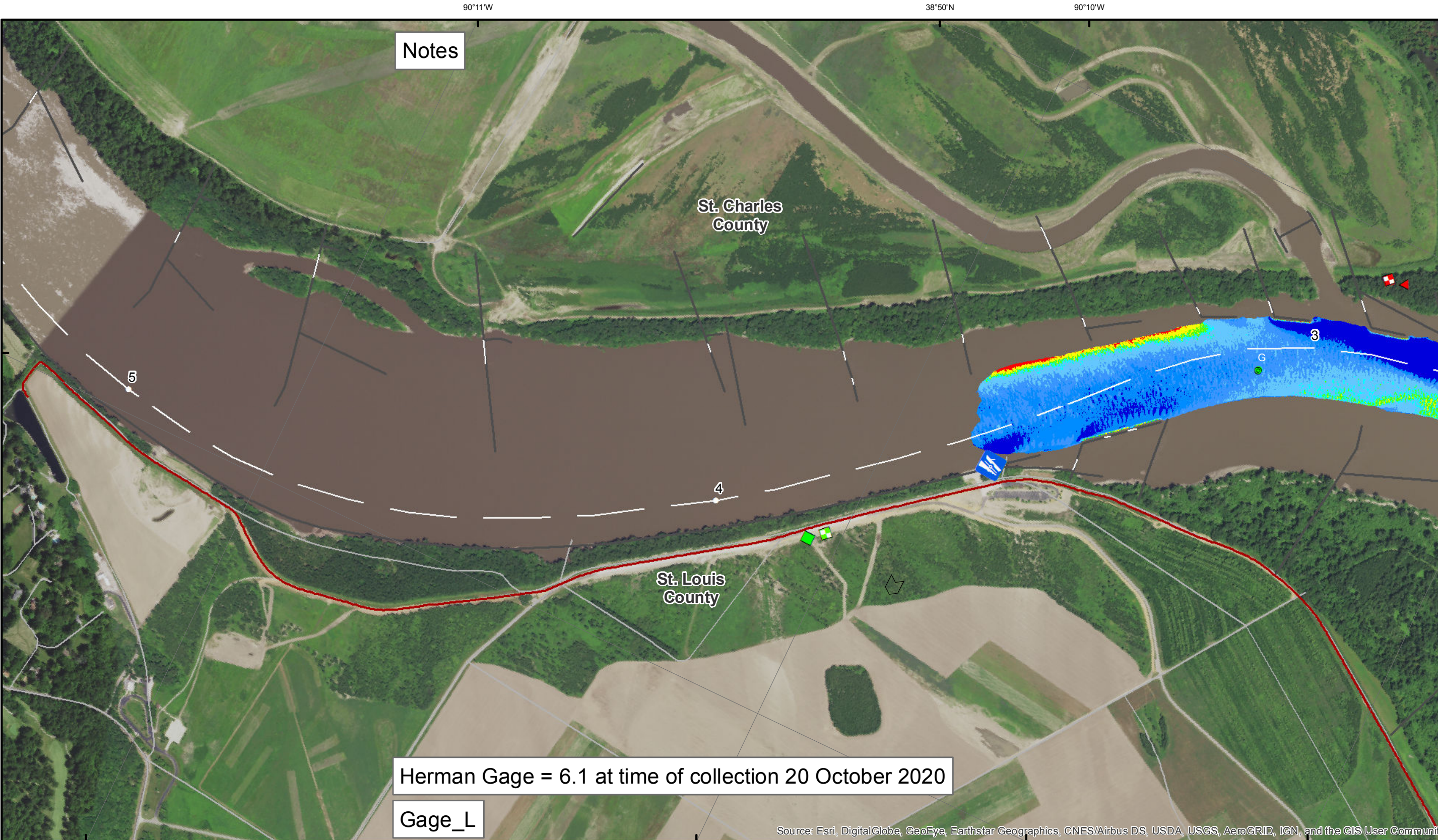


DISCLAIMER: The United States Government furnishes this information for a specific purpose and does not warrant its accuracy or completeness. It is provided as a service to the user and is not intended to be used for any other purpose. The user assumes all responsibility for the accuracy or completeness of the information and the data furnished. The United States Government is not liable for any damages, including consequential, arising from the use of this information. The user assumes all responsibility for the accuracy or completeness of the information and the data furnished. The United States Government is not liable for any damages, including consequential, arising from the use of this information.

KANSAS CITY DISTRICT MISSOURI RIVER AREA OFFICE	
Submitted By:	MIRAO
Reviewed By:	MIRAO
Checked By:	MIRAO
Approved:	

Survey Information
 MO_01_LMR
 MO_01_LMRX_20201020_CS_02_03_05_SORT
 20 October 2020

Sheet Number
 1 of 46



LEGEND

	< 8		< 8 ft		Green Passing		Green		Green CAN
	8 - 9		8 - 9 ft		Red Passing		Red		Red NUN
	9 - 9.5		9 - 10 ft		Green Crossing				
	9.5 - 10		10 - 12 ft		Red Crossing				
	10 - 12		River Mile						
	12 - 14		Sailing Line						
	14 - 16		BSNP Structure						
	> 16		Levee						

Buoy

Green

Red

Junction

Scale: 0, 312.5, 625, 937.5, 1,250, 2,500 Feet

NOTES:
 Horizontal Coordinate System:
 World Geodetic System of 1984 (WGS84), projected to the
 Universal Transverse Mercator (UTM) Zone 15 North.
 Distance units in U.S. Survey Feet

Vertical Datum:
 Soundings are shown in feet and indicated depths
 are referenced to water surface at time of collection.

The information depicted on this map represents the results of a survey
 conducted on the date indicated and can only be considered
 to represent the general condition existing at that time.

The location of navigation aids are based on and provided by
 the U.S. Coast Guard.

Notes

Herman Gage = 6.1 at time of collection 20 October 2020

Gage_L

Source: Esri, DigitalGlobe, GeoEye, Earthstar Geographics, CNES/Airbus DS, USDA, USGS, AeroGRID, IGN, and the GIS User Community



DISCLAIMER: The United States Government is authorized to reproduce and distribute reprints for Government purposes not withstanding the copyright notice. This document is in the public domain in the United States of America. The views and opinions contained herein are those of the individual and do not necessarily represent those of the U.S. Army Corps of Engineers. The information contained herein is for informational purposes only and is not to be used for any other purpose. The information is provided as is and the user assumes all responsibility for its use. The information is not to be used for any other purpose. The information is not to be used for any other purpose. The information is not to be used for any other purpose.

KANSAS CITY DISTRICT MISSOURI RIVER AREA OFFICE	
Submitted By:	MRAO
Reviewed By:	MRAO
Checked By:	MRAO
Approved:	

Survey Information

MO_01_LMR
 MO_01_LMRX_20201020_CS_02_5_03_5_SORT
 20 October 2020

Sheet Number
 2 of 46